

Spire

March
2021
Vol. 30
No. 3

A Note from Pastor Karla...

Shortly after I gave birth to my son I felt disoriented and this disorientation lasted for several months. This happens to a lot of people when big changes occur whether it includes becoming a parent or not. In major transitions--loss of a loved one, retirement, kids leaving home--we feel out of sorts and just want to feel "normal" again. But often the path to reorientation is not a return to a past self or life, but instead an acceptance of a new reality, as the old life doesn't fit who we have become in the transition. That, my friends, is the end of the process of grief --acceptance.



This pandemic has been disorienting and we have been in a process of grief. Have we come to a place of acceptance?

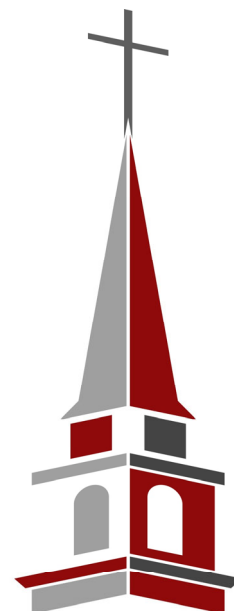
I remember last year at this time feeling like my head was spinning as the world around seemed to fall apart. The torrent of emails about closures, the long lines at the grocery store, and the large looming questions that ensued. But just like any transition, that time ended after several months. My head did stop spinning and we all learned pretty quickly how to adapt to a new way. Now as we slowly return and things are beginning to open up again, we now have a new reality with which to wrestle with, as we are not the same as we once were and so going back and pretending that we are, well that is neither wise nor heeding all the wonderful ways God has moved in us this past year.

Continued on page 2

Point Loma Community Presbyterian Church

Worship Services Online
Red Brick Kids Worship
Sunday 9 am
Sunday Worship
9:30 and 11:00 am
Café Service 9:45 am
outdoors on campus
www.pointlomachurch.org

Rev. Karla Shaw
Senior Pastor
2128 Chatsworth Blvd.
San Diego, CA 92107



Follow us on Facebook for weekly updates:

www.facebook.com/PointLomaChurch

Sign up for our weekly eNews:

pointlomachurch.org

INSIDE THIS ISSUE

Session Highlights	2
Adult Ministry	3
Senior Adult Ministry.....	3
BRICK Youth	4
Red Brick Preschool	4
Children's Ministry.....	5
Lenten Opportunities	6
Return to In-Person Worship..	7
New Members	8
Snapshots Around Campus.....	9-10
Staff & Session Contacts	11

LOOKING AHEAD

March 3:	Weekly Lent Series
March 6:	Lent Quiet Day
March 10:	Weekly Lent Series
March 17:	Weekly Lent Series
March 24:	Weekly Lent Series
March 28:	Palm Sunday
April 1-2:	Path to the Cross
April 4:	Easter

Our Vision: Loving Everyone to LIFE with Everything we Have.

Our Mission: Through authentic community, we seek to EXPERIENCE Jesus, JOURNEY into Deeper Faith, STRENGTHEN the Church, and TRANSFORM our World.

Values:

1. We are a good home.
2. We are intergenerational.
3. We inspire engagement.

Easter
HE IS RISEN!

Sunday April 4

9:30 and 11 am
ONLINE
at pointlomachurch.org

10:00 am
OUTDOOR
on Udall Street

Session Highlights - January 27, 2021

As our church continues to evolve and re:imagine its operations, the members of Session are also responding to a need to re:imagine the Session’s organizational structure. Elder Max Butterfield, chair of the recently formed Church Governance Working Group, led a discussion at the Feb. 24 Session meeting developing a restructuring process for the Session’s committees and operations.

The Teaching and Ruling Elders are committed to building a Session that is responsive to the PLCPC Mission and Vision Statements. They agreed to cooperatively build a new design in the coming months.

Pastor Karla Shaw played the video recording of the Session’s Racial Issues Statement, presented to the congregation last Fall, and challenged each Session Committee to re:imagine how in their programs they are “loving everyone to life with everything they have.”

John Spafford
Clerk

**Path to the Cross—
A Holy Week Experience**



For Holy Week this year, you are invited to experience a 40-minute walking tour of the outdoor church areas including the Sanctuary which will depict dramatized scenes from Jesus’ “Path to the Cross.” Your tour guide will guide your path as you encounter folks living in the year 33 AD in Jerusalem.

This easy walk will include live music in the Sanctuary. In order to maintain social distancing guidelines, this will be a timed-entry event. Reservations must be made in 5-minute increments for groups of 4. Facial masks will be required as well. Register at pointlomachurch.org/register.

Palm Sunday —Online, In-Person and Drive-In!

We will celebrate Palm Sunday this year with online, in-person and a drive-in worship service. Choose which style feels most comfortable to you!



Palm Sunday Worship online at 9:30 and 11 am via pointlomachurch.org

Café Worship Outdoors will be held at 9:45 am as usual on the turf area.

***Drive-in Worship Service** at 10 am. Worshippers remain in the vehicles and listen via FM radio. Parking spots are limited.

***Advanced registration is required. Visit pointlomachurch.org/register to sign-up.**

A Note from Pastor Karla, continued from page 1

We are in a new transition and have to now go through a new process of grief.

Which is why I am grateful to be in the season of Lent right now, as Lent gives us all an opportunity to reflect on who we have become. One thing I have learned about our church family is "we know how to pivot quickly and that means we can do it again." Many of us have been surprised by how much we have enjoyed the changes that have been made this year in our life together, what can we learn from that? What are things you have learned about our church family? About yourself? What is important? Who have we become in our new way of being? What have we learned? What do we want to carry forward?

As we slowly invite more ministries back to the church campus these next weeks and months, I want to remind us all that our returning is not likely to look as it did before the pandemic, it can't. We have changed. God has led us in new ways and it would be unfaithful to not make room for that growth. But, we also must acknowledge the loss in that reality. So if you are feeling more emotional than you thought you would with all the reopenings, I hope you know that is normal. And please also know, we are in this together with all of our emotions. No one will be left behind.

In gratitude,
Pastor Karla

ADULT MINISTRY

Sunday Scripture Group—Sundays at 10:45 am. Join us for *The Gospel Collection*, the first word-for-word adaptation films of the gospels using the original narrative as the script with the latest theological, historical and archaeological research.

Contact: Bob Simoneau, grs55@cox.net for Zoom information

Monday Morning Men—Monday mornings from 7-8:30 am.

Virtual coffee via Zoom. Different guest speakers each week.

Contact: Evan Gratz, evan@pointlomachurch.org

Women's Bible Study—Tuesday at 9:15 am. Pastor Karla is leading a study on the books of 1 and 2 Chronicles.

Contact: Clara Blenis, clblenis@sdccd.edu

MOPS (Mothers of Preschoolers)— Tuesdays at 7 pm via Zoom.

Topics for this month: **March 2** Bible study, **March 9** The Positive Effects of Nostalgia, **March 16** Book Club: *City of a Thousand Gates* by Rebecca Sacks, **March 23** Be Strong: Tools for Building Mental Stamina, **March 30** Bible study

Contact: Julia Roller, mops@pointlomachurch.org

Continuing The Conversation (CTC)—4th Tuesday at 7 pm. All are

invited to join us for an inter-faith discussion designed to promote a *hate and racism-free society through transformed hearts and minds*. Contact: Gordy Lutes, gklutes@gmail.com

Journeyman— Wednesdays at 7 am. All men are invited to join this group of guys who chat about life and discuss relative topics all while digging into what Scripture says about them.

Contact: Evan Gratz, evan@pointlomachurch.org

Men@Work— Wednesdays at 8:30 am. All men are welcome! At present we meet via ZOOM each Wednesday morning at 8:30 for a time of camaraderie and Bible study under the leadership of Em Cummins.

Contact: Don Griffith, 619-432-2682 or don.griffith69@gmail.com

Wednesday Men's Bible Study at 5pm via Zoom. Fellowship and study time. We continue meetings through Zoom as we study the Book of Hebrews. All are welcome.

<https://us02web.zoom.us/j/6192231623>

Contact: Jerry Heidt, gheidt@ghhco.com

Moms Small Group—1st & 3rd Thursdays at 6:45 pm. Led by Pastor Karla, we are studying the book of Isaiah.

Contact: Pastor Karla, karla@pointlomachurch.org

Centering Prayer—Thursdays weekly, via Zoom.

Contact: Pastor Alex, alex@pointlomachurch.org

Prayer Quilt Ministry— 1st Saturday, 9am-3pm, Family Life Center.

Contact: Karen Vandenberg, ktvandenberg@aol.com.



SENIOR
ADULT
MINISTRY
PROGRAMS

Elaine Burrell, Director, MSW | elaine@pointlomachurch.org 619-223-1633 x210

The time has come! Senior Adult Ministry is re-opening for selective outdoor senior events on campus. All activities will adhere to proper safety guidelines. Upcoming events include:



St. Patrick's Day Concert & Packaged Lunch | Wednesday, March 17, 2021 Sanctuary Patio Gates open at 10:30; concert 11-12:00pm

Enjoy your bagged lunch while listening to the joyful Irish music of Eamon Carroll. Space is limited to 18 household pods, reservations are required. **Reserve your spot by contacting Elaine by March 10.**

Special Notes: Masks required when not eating or drinking; Please dress appropriate for the weather, you will be outside. Rain CANCELS this event.



Coming soon! Gentle Exercise Class in Partnership with the Ryan Family YMCA

Classes will likely resume in April in one of our outdoor spaces. Details to be announced.



Elaine and Friends Daily Message (continues through April 4)

619-223-1633 x214 Monday through Friday

Call in to hear a new message each day:

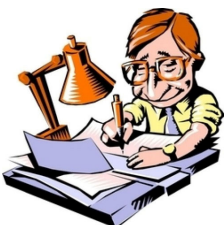
Monday – This Week in History

Tuesday – Devotional

Wednesday – Musings from Em Cummins' Bookshelf

Thursday – Medical Tips from Dr. Gresham Bayne

Friday – Humor



Authors In Our Midst

It is a little known fact that several of our church members are also published authors. Are you one of them? If you or someone you know from church has published a book in the past 20 years, we want to know about it! We will compile the list and share it with the church community. Please call or send the following information to Elaine Burrell, elaine@pointlomachurch.org, 619-223-1633 Ext. 210: **your name, title of your book, one sentence describing the topic of the book, and year published.**

Brick Mondays Meets on Campus on the Outdoor Turf!*

Monday night gathering for fun, faith and fellowship.

Current teaching series includes:

6th Grade 5:30—6:30 pm

The Character of God (Examining the characteristics of God)

7th-8th Grade 6:30— 7:30 pm

Going After God's Heart (A Study of David)

High School 7:30—9 pm

Jesus is _____. (Discuss what and who this Man really was and is)

Each week we begin with games, followed by Bible study based on the above series, and wrap-up with small group discussions. All youth are invited to join us!

Brick Youth Open Door On Wednesdays from 3-5 pm*

All youth in grades 6-12 are invited to Open Door on Wednesdays from 3-5 pm, It's a time to simply "hang out" together in the Youth Center. There is no set program or agenda, and kids can come and go as they please. Bring a little money as we usually head over to the donut shop for some goodies! * **Masks must be worn and RO must have a current waiver on file to attend.**

**BRICK MONDAYS
on the Turf**

Junior High 6th grade
Mondays 5:30-6:30 pm

Junior High 7th & 8th grade
Mondays 6:30-7:30 pm

High School
Mondays 7:30-9 pm

BRICK THURSDAYS

High School 7:30-9:00 pm
on the Turf

For more information, email
ro@pointlomachurch.org

Summer Camp!

High School Houseboats is a go this summer! All current 8th-12th grade students are invited to join us July 25-31 at Lake Shasta. We will spend the week playing in God's creation with activities like Boondoggle, banana boating, and skiing/wakeboarding. We will be worshipping God and learning about Him and who He created us to be, and we will be celebrating community and life together. For more information, visit our website pointlomachurch.org/register.

Plans are still being developed for junior high summer camp. Stay tuned for details!



Nicole Hage, Director | preschool@pointlomachurch.org 619-223-3327 | www.redbrickpreschool.org

Point Loma Community Presbyterian Church is offering 8 weeks of summer camp for children ages 3 years through 5 years old. Each week will have a different theme. The children will have the opportunity to explore and play in a nurturing Christian environment. Space is limited, and we will take registration on a first come first serve basis. **Vacation Bible School June 28 – July 2 will have a Separate registration.** You don't want to miss it.



We know that there are not a lot of options for Summer camps for this age group and wanted to give you some fun, engaging activities for your child. The children will get to play, explore, do art and science projects. Each week will be full of exciting and action-packed activities. For more information please visit our website at www.redbrickpreschool.com.

Registration for the Fall school year has begun, and we are almost full. If you are interested in having your 2-5 year old enroll please call us today!

We have a new preschool playground! See page 9 for pictures!



Sunday Programs

Join us every Sunday online at 9 am for the Red Brick Kids Worship Service. Simply visit pointlomachurch.org and click on the Worship graphic.

Children's Ministry Blog

Did you know that our Red Brick Kids Worship service is posted on our website each week in case you miss it on Sunday mornings? To watch it, visit our website—pointlomachurch.org. Click on the ministries tab, then scroll to Children and click on the Children's Ministry Blog link on the right side of the page.



Journey continues on Mondays 4-5:30 pm. Email Karen if your 4th or 5th grader is interested in joining the fun. Due to current gathering restrictions, our group is limited to 14 kids.



Adam Thompson, a long time church member and former music and PE teacher, has accepted the Journey Leader position and is now directing our 4th & 5th grade mid-week program on Mondays. Congratulations, Adam! Now that our program is held on the outdoor turf area there are many opportunities for him to lead fun athletic type games while guiding the kids towards a stronger faith life.



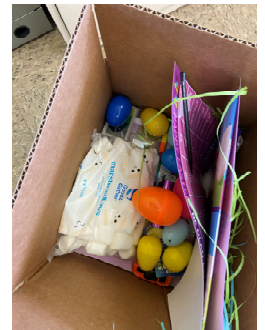
Hang Time in the Park

Hang Time in the Park, a new 6-week program for young children through 1st grade, successfully began on February 24. Up to 12 kids and their parents meet Children's Ministry staff on Wednesdays at Liberty Station park through Lent to learn about Jesus in a casual outdoor setting with crafts, games and a Bible story.



Easter in a Box

Our Easter in a Box project is complete with 70 boxes handed out or delivered the week of Ash Wednesday. Each box contains a Lenten Adventure Guide and meaningful items to lead kids and their families through this season of preparation. There are also a few fun Easter surprises.



Bible Memory 2021

Nine children, grades 3-6, have joined the Bible Memory class of 2021 and are hard at work every Sunday under the direction of Judy Pritchett. They are memorizing scripture and many other elements of the Bible in preparation for their spring graduation when they will receive a personalized Bible after reciting a specially chosen Life Verse. The students are meeting safely indoors in our new Children's Center.



Our MOPS groups welcomes all moms with children school age or younger to join us for encouragement and learning about how to be better parents. For now, we meet over Zoom every Tuesday night at 7 pm. For more information or to join us please contact Julia Roller at mops@pointlomachurch.org.



March meetings include:

- March 2** Bible study
- March 9** The Positive Effects of Nostalgia
- March 16** Book Club: *City of a Thousand Gates* by Rebecca Sacks
- March 23** Be Strong: Tools for Building Mental Stamina
- March 30** Bible study

Midweek Lenten Series via Zoom

Lent is a time of preparation beginning with Ash Wednesday. It is the 40 days (not counting Sundays) leading up to Easter. It is a time to open our hearts a little wider in an attempt to understand our Lord a little deeper. It marks a tangible way for us to receive God's overflowing grace when Easter comes. We prepare for it, we reflect on it and we anticipate it so that when Easter Sunday arrives we are deeply reminded that it is not just another Sunday.

Each year, we offer a weekly Lenten series to help us all prepare for the joys of Easter. This year, you are invited to join us for *A Musical Journey through Lent*. Held on Wednesday evenings at 6 pm via Zoom, each week we will examine a particular song and how it connects to the Easter story.

Lenten Series Schedule

March 3 | 6pm

Led by RO Smith, Director of Youth Ministries and Café Worship Leader

Song: *Valjean/ Javert Soliloquies* from *Les Misérables*

March 10 | 6 pm

Led by Pastor Alex Wirth

Song— *Kyrie Eleison* ("Lord Have Mercy" in Greek)

March 17 | 6pm

Led by Pastor Karla Shaw

Song—*Mothers of the Disappeared* by U2

March 24 | 6 pm

Led by Alicia McMillan, Director of Worship and Music

Song— *Seven Last Words* by Michael John Trotta.

Sign up to attend by visiting pointlomachurch.org/register.

The Zoom link will also be available on our website at pointlomachurch.org/lent-events

A Musical Journey Through Lent

Wednesdays at 6 pm via Zoom
Feb. 24, March 3, 10, 17, 24



**DEBRIEF
THE
SERMON**
All Are Welcome!
Each Sunday during Lent
after the 9:30 am service
discuss and explore living out the sermon
Zoom link posted in the chat room after the postlude
Questions? E-mail: LynnZiggy@gmail.com

Debrief the Sermon

Please join the Debrief the Sermon team in journeying together to unpack the sermon's meaning to each of us. Let's discover and learn together as we respond and apply the challenges of the morning's message. Just click the provided zoom link after the 9:30 online worship service in the chat area. ANY and ALL are welcome!

Deacons' Lenten Food Drive

The Deacons' annual Lenten Food Drive begins February 17 and runs through Easter Sunday, April 4. Donations of non-perishable food and personal hygiene items are being accepted to support the following PLCPC partners: New Day Urban Ministries (formerly PUM), Loaves & Fishes, OB Community Dinners and Military Outreach Ministries.



Ideas for items to donate include: top ramen, cereal, tuna, canned fruit, pasta, rice, peanut butter, chili, beans, and toiletry items.

Donations may be brought to any on-campus Worship service or the church office. Monetary donations are also accepted, simply note Deacons Food Drive on the check memo line. For more information, contact Kathy Zorn or Eddie Dees at 619-224-2177.



RETURN TO INDOOR WORSHIP UPDATE

The Worship & Arts Committee appreciates greatly the encouraging and insightful responses we have received to the Worship Survey. Your reflections, ideas, and concerns are extremely helpful. If you have not yet been able to complete the survey we welcome and invite your responses. Please contact Joyce Pritchett to gain access communications@pointlomachurch.org.

As mentioned in the survey, we are hoping to return to in-person worship in the Sanctuary on Sunday, April 11.

As we have been reviewing the comments regarding a time shift for our CaféService and Sanctuary Service, there is a consistent question being asked, *"Why can't the Sanctuary service be earlier than the Café Service?"* As a result, we wanted to provide some background and detail to our thinking at this time as we discern our next steps.

Most importantly, we want to clarify that the times being proposed are for the interim period, and are not forever. Under our current circumstances, we cannot return the Café Service to the Chapel right now due to the size of the Chapel and the lack of windows and ventilation. We therefore need to keep the CaféService outside of the Sanctuary in the parking lot on our new turf. (We did consider building another turf area in the back parking lot, but that seemed like both an unnecessary expense and potential noise problem for

our neighbors). This temporary set-up will need to remain in place until we can relocate the CaféService back into the Chapel and that may take some time. We are therefore considering this interim schedule so that we can begin to accommodate an in-person (but still limited) Sanctuary Service.

As a result of the Café Service needing to remain where it is, it must take place prior to the Sanctuary Service during the interim period. This is because the Café Band needs 1.5-2 hours to set-up and practice prior to the start of the service. And this cannot happen while a service is going on in the Sanctuary due to the shared airspace and having to keep windows open. Thirty minutes is also needed in-between services to allow enough time for our Children's Ministry staff to clean and sanitize between groups of kids.

Although the Worship and Arts Committee is also discerning a move to one service in the Sanctuary instead of the two in the long-term, once the CaféService is allowed to move back inside, the Sanctuary time will likely shift earlier. Just like everything else, you will be asked to give feedback on that when the time comes.

And, as promised, we will continue to offer our online option for those who do not feel ready to return. Thanks to two large donors, the online option will continue into the future.

I'm constantly amazed with what our Lord has accomplished through our PLCPC family over the past year and as Pastor Karla has been sharing with all of us, "we pivoted successfully once before, we can do it again!"

Elder Chris Capen, chair
Worship and Arts Committee

Should I get Vaccinated?



Folks, people keep asking me if they should get vaccinated, and the answer is an emphatic YES! The COVID19 infection can be fatal, debilitating or even leave you with major, chronic physical disabilities. Our first two vaccines are proven safe: millions of us have now received them with no deaths or serious side effects. What you don't know is that this virus is truly unique: it has been shown in animal studies to create as many as EIGHT mutations in a single organism at the same time. This means it is likely that new strains will develop that will NOT be susceptible to the current vaccines. If we do not reach a prevalence of 70% of us being fully vaccinated ("herd immunity"), this virus will hang around and have ample opportunity to mutate. Single mutations have already occurred and appear to be susceptible to the current vaccines, but the future will not be so simple. Protect yourself, and your neighbor...we are all in this together.

~ C. Gresham Bayne MD

March Chancel Flowers—re:imagined



Each week, the Deacons deliver flowers (with masks and social distancing) in order to brighten days and bring cheer. We are so grateful to those who have donated to make this flower ministry possible. The flowers are given:

March 7

- in joyful memory of parents Helen and Bill Kearns, and sister Maggie, by Carol (Kearns) Nicolson and Kathy (Kearns) Dixon.
- by Enny Smith to continue to thank the Lord for His joy and love for her birthday.

March 14

- in loving memory of Glen Burgess by the Davis family, we miss you big guy.
- in celebration of Charlie, Ellen, Stephen and Margaret MacVean's March birthdays.

March 21

- by Kathy and Larry Willette and family in loving memory of our parents, Jess and Florence Willette and Lawrence and Bernice Chabot.

March 28

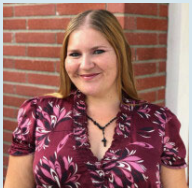
- by Chuck and Kathy Wright in memory of their parents, Charles and Cecil Wright and Mearl and Hazel Youel.

Chancel Choir News

This year the New Covenant Choir continues to meet via Zoom and has welcomed experts in the area of singing and choral conducting to share their expertise, lead us in vocal warm-ups and address various vocal topics. We also participated in a combined choir rehearsal with the Fletcher Hills Presbyterian Church choir on zoom. The speakers have included Don Brenneman, Sarah Suhonen, Dr. Kathi Rundus and Dr. Patrick Walders.



Welcome New Members!



Andrea Catherine Benitez is joining by Reaffirmation of Faith. She and her husband Jorge have two boys, Jayden (13) and David (10), who are involved in boxing. Andrea is the Administrative Assistant for our PLCPC Preschool working closely with Nicole Hage in all aspects of the Preschool. She loves to write, sing and dance. She is active with her boys and helps with their schooling. When not working, “my world is all about my kids. Family is my Number 1.” andrea@pointlomachurch.org.



Christian Chandler Moore is joining by Reaffirmation of Faith. He is single and works as an event manager at Behind the Scenes Catering. Also, Christian is employed as our PLCPC Youth Ministry Assistant with RO Smith. Among his church friends are John Brand and his family. Christian loves the outdoors, particularly rock climbing, and he competes in video game tournaments. christianm1234@gmail.com.

Life Events

Death:

- We send our deepest condolences to the family of Deb Andrews, who passed away on February 10, 2021.

Baptisms:

- Susan Blair was baptized in the Sanctuary on February 13, 2021. Rev. Karla Shaw officiated.
- Benjamin Blevins was baptized in the Sanctuary on February 13, 2021. Rev. Karla Shaw officiated.
- Jaiden Raja Owen Smith, son of RO and Mindy Coates-Smith, was baptized on February 14, 2021 during the Caféservice. Rev. Karla Shaw officiated.



The New Covenant Choir continues to meet weekly via Zoom. They have been hosting guest speakers each week as well!



We welcomed Jaiden Smith to the church officially through baptism at the Café service on February 14.

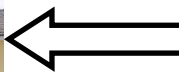


We had another successful Drive-In Worship service on February 7. Make plans now to join us again on Palm Sunday, March 28.

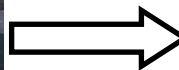
We are so excited to have installed our new playground structure! We have been saving for this for years! The children are so excited to play on their new playground! You can see it from the side parking lot. It is huge and so much fun!



BEFORE



AFTER



Did you get ashed on Ash Wednesday with us? Though it was a different sort of Ash Wednesday, we were happy to see so many of you in person while we distributed Lent @ Home bags, as well as Easter in a Box kits.



The BRICK Youth (6-12th grade) had a blast roller skating at Derby United!



The children's Art, Drama and Movement class has been busy rehearsing for an Easter play and making backdrop decorations.



SESSION & STAFF

THE SESSION OF PLCPC *Denotes Chair

Rev. Karla Shaw, Senior Pastor 619-223-1633 Ext: 202
 Rev. Alex Wirth, Associate Pastor 619-223-1633 Ext: 205
 John Spafford, Clerk 619-985-4983, clerk@pointlomachurch.org
 Kathy Wright, Assistant Clerk 619-275-0335, kwright6@outlook.com

Elder Class of 2021	Phone	E-mail
Buck Buchanan <i>Facilities*</i>	619-841-4080	pbuchanan98@yahoo.com
Max Butterfield <i>Long Range Planning*</i>	810-441-6527	mbutter@pointloma.edu
Mike Long <i>Youth Ministry*</i>	254-640-0451	mikelong22@gmail.com
Frank Polese <i>Finance</i>	619-843-1282	fpolese@oasismaterials.com
Rita Solberg <i>Mission Beyond*</i>	619-222-2841	ritasolberg@cox.net
Barbett Wood* <i>Children's Ministry/ Preschool*, Presbytery Commissioner</i>	619-226-1644	makoakani@gmail.com
Elder Class of 2022	Phone	E-mail
John Brand <i>Facilities</i>	619-992-1835	jbrand@sentre.com
Chris Capen <i>Worship & Arts*</i>	858-243-7515	chriscapen@mac.com
Rocky Springstead <i>Mission Beyond</i>	619-208-4467	Rocky.springstead@yahoo.com
Kristin Stephany <i>Adult Ministry*, Audit</i>	619-654-6180	winechicks@aol.com
Carolyn Verhoye <i>Nominating*</i>	619-925-2065	worldkids2k@aol.com
Pam Werner <i>Stewardship</i>	619-955-8696	skiwerner@gmail.com
Stephanie Wylie <i>Personnel*</i>	619-223-8240	skwylie@cox.net
Elder Class of 2023	Phone	E-mail
Gresham Bayne <i>Finance & Stewardship*</i>	619-223-3494	cgbaynemd@gmail.com
Susan Cramer <i>Planning</i>	619-971-0541	Swcramer1@gmail.com
Carolyn Griesemer <i>Children</i>	619-929-7201	carolyn.griesemer@gmail.com
Gary Spradling <i>Personnel</i>	619-244-1812	spradling@dsmw.com
Lynn Ziegenfuss <i>Adult Ministry</i>	619-573-3372	lynnziggy@gmail.com

Church Ministry Program and Support Staff 619-223-1633

OFFICE HOURS

Monday—Thursday 9 am to 5 pm
 Friday— 9 am to 1 pm

Rev. Karla Shaw, Senior Pastor
 karla@pointlomachurch.org—Ext. 202

Rev. Alex Wirth, Associate Pastor
 alex@pointlomachurch.org—Ext. 205

Rev. Dr. Chris Lenocker, Parish Associate
 chris.lenocker@gmail.com—619-987-8433

Jolene Wade, Director of Operations & Church Life—Ext. 204
 jolene@pointlomachurch.org

Alicia McMillan, Director of Worship & Music—Ext. 208
 Organist/Director of Children's Choirs
 alicia@pointlomachurch.org

Adam Thompson, Music and Children's Choir Assistant/ Journey Leader
 adam@pointlomachurch.org

Bryan Verhoye, Music Associate & Pianist
 mrvagguy@aol.com

Evan Gratz, Director of Community Life
 evan@pointlomachurch.org—Ext. 211

Elaine Burrell, Director of Senior Adult Ministry
 elaine@pointlomachurch.org—Ext. 210

R. O. Smith, Director of Youth Ministry/Café Worship Leader
 ro@pointlomachurch.org—Ext. 216

Christian Moore, Youth Ministry Assistant
 christian@pointlomachurch.org

Karen Connor, Director of Children's Ministry
 karen@pointlomachurch.org—Ext. 215

Alexis Price, Children's Ministry Assistant
 alexis@pointlomachurch.org—Ext. 212

Julia Roller, MOPS Coordinator
 mops@pointlomachurch.org

Cynthia Hernandez, Child Care Coordinator
 cynthia@pointlomachurch.org

Nicole Hage, Preschool & TLC Director
 preschool@pointlomachurch.org—Ext. 220

Andrea Benitez, Preschool Admin Assistant
 andrea@pointlomachurch.org—Ext. 221

Ann Simoneau, Administrative Assistant—Ext. 203
 ann@pointlomachurch.org

Kari Shenk, Interim Bookkeeper—Ext. 206
 bookkeeper@pointlomachurch.org

Joyce Pritchett, Communications Coordinator
 communications@pointlomachurch.org—Ext. 209

Church Office / Front Desk—Ext. 201
 frontdesk@pointlomachurch.org



Did you know we have a podcast?

The Point Loma Community Church Podcast includes the weekly sermon and other special classes. Listen on your favorite podcast platform. For more information, visit pointlomachurch.org/connect/podcast

Point Loma Community Presbyterian Church
2128 Chatsworth Boulevard
San Diego, CA 92107
(619) 223-1633

RETURN SERVICE REQUESTED

NON-PROFIT ORG.
U.S. POSTAGE
PAID
PERMIT NO. 188
SAN DIEGO, CA

Upcoming Opportunities

March 10, 17, 24 —A Musical Journey Through Lent

6:00 pm via Zoom

March 28—Palm Sunday

9:00 am— Red Brick Kids Worship (online)

9:30 am— Online Worship

9:45 am— Café Service

10:00 am—Drive-In Worship*

11:00 am—Online Worship

April 1 & 2—A Path to the Cross: Holy Week Experience

6-8 pm—Outdoors on Campus*

April 4—Easter Sunday

9:00 am—Red Brick Kids Worship (online)

9:30 am—Online Worship

10:00 am—Outdoor Worship on Udall Street

11:00 am—Online Worship

* **Advanced registration is required.**

Register at pointlomachurch.org/register

